



---

<b>Product Name</b>	GAOTek Smart Home Wireless Bluetooth Beacon
<b>Product SKU</b>	GAOTek-BB-153
<b>Product URL</b>	<a href="https://gaotek.com/product/gaotek-smart-home-wireless-bluetooth-beacon/">https://gaotek.com/product/gaotek-smart-home-wireless-bluetooth-beacon/</a>



## CONTENTS

1. PRODUCT SUMMERY.....	3
1.1 INTRODUCTION.....	4
1.2 FEATURES.....	4
1.3 KEY BENEFITS .....	5
2. MARKET APPLICATION.....	6
2.1 APPLICATION CASES.....	6
3. WORKING PRINCIPAL.....	7
4. PRODUCT SPECIFICATION.....	8
4.1 SOFTWARE SUPPORT .....	9
5. PRECAUTIONS.....	10
6. QUALITY ASSURANCE .....	10
7. DIMENSIONS .....	11

## 1. PRODUCT SUMMERY

GAOTek Smart Home Wireless Bluetooth device is a data collection and upload with WPA2-EAP enterprise-level encryption, hence assisting users to connect to cloud servers quickly, ensuring data security and privacy. Its connection version can communicate bidirectionally with asset tags, and environmental sensors by downlink configuration operation. Its embedded colorful circle light strip serves as an indicator to remind users of its status. The G1-E gateway is designed to help users quickly implement high-value location-based services and help users boost their efficiency while lowering variable costs. It has a wide range of applications, including warehouses, healthcare, retailing, and manufacturing.

### Connection Any Where



## 1.1 INTRODUCTION

- GAOTek smart home wireless Bluetooth beacon is a Bluetooth low energy (BLE) to Wi-Fi connectivity gateway without the uses of smartphones or apps, consisting of BLE module, Wi-Fi module and a color lamp ring on the top.
- It collects the data from iBeacon, Eddy stone, BLE sensor and other BLE devices, and then sends to the local server or remote cloud server by HTTP, MQTT, TCP protocol over Wi-Fi, Ethernet.
- Power supply by USB or Ethernet and can support Azure, AWS, ARM embedded IOT hub.



## 1.2 FEATURES

- Built in RTC and NTP support sensor and automation control.
- RGB LED string as the status indicator.
- Based on Open Wrt 15.05.
- Supports 802.3 af POE standard.

## 1.3 KEY BENEFITS

### ➤ High Security & Strong Compatibility

- ⇒ G1-E supports WPA/WPA2-EAP enterprise-level encryption, to keep unauthorized people from accessing or changing settings.
- ⇒ G1-E is compatible with different Bluetooth devices, supporting various data formats to meet the requirements of different development platforms.

### ➤ Self-repairing Fault 8: High Stability

- ⇒ G1-E gateway has Wi-Fi recovery function and can add multiple Wi-Fi access points.
- ⇒ To prevent data loss, it can store data locally in case of disconnecting.
- ⇒ Through compelling troubleshooting and recovery capabilities, it is guaranteed that the gateway works flawlessly and is maintenance-free.

### ➤ High Throughput & Data can be Filtered

- ⇒ G1-E can collect and process 400-800 data packets per second, collecting and monitoring data from massive Bluetooth devices with a large coverage.
- ⇒ It has multiple data filtering options, not only controls the data flow but also filters out the duplicates, to reduce redundant data.

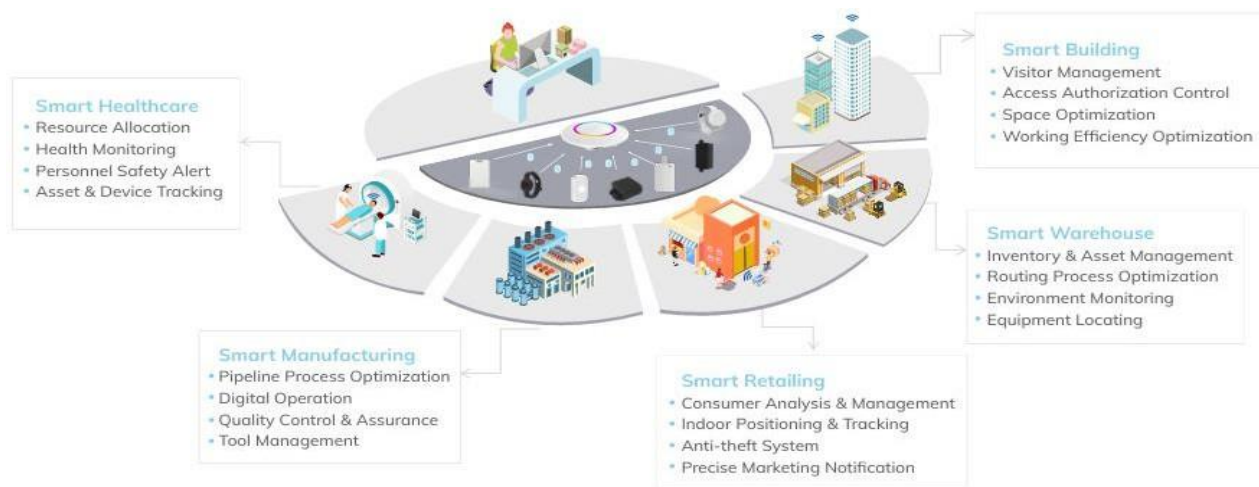
### ➤ Remote Access and Manage by Batch

- ⇒ Other than connecting by Wi-Fi, users can access it remotely. And use a tool kit to change settings or update firmware by batch.
- ⇒ Users can also subscribe to related subjects and receive status reports instantaneously, making the process as easy as a breeze.

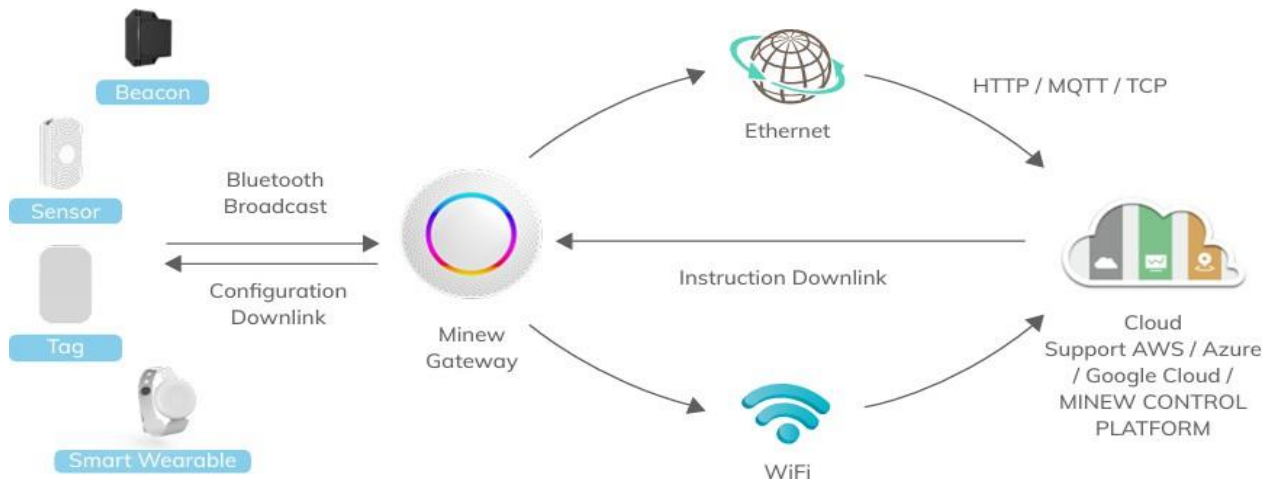
## 2. MARKET APPLICATION



### 2.1 APPLICATION CASES



### 3. WORKING PRINCIPAL



- 0 Deploy the G1 - E gateway by adjusting to the on-site environment. Choose the best installation method according to your scenario.
- Bundle the Bluetooth beacon device with the asset, person, tool, or mobile device that needs to be located.
- Within the scanning range, the G1-E gateway will receive the Bluetooth signal broadcast signal from the Bluetooth beacon and upload it to the corresponding server through different network protocols.
- The user parses the data and can also control the terminal after giving command to accomplish objectives such as position and asset management.



## 4. PRODUCT SPECIFICATION

BASIC SPECIFICATIONS	
Model	G1-E
Material	ABS
Color	White
Size (D*H)	0150*36 mm
Weight	155g
Power Supply	DC 5V/1A, 802.3af PoE
Network Connection	WiFi/ Ethernet
Interface	1*10/100M RJ45 port, 1*USB port
LED	Power supply server connection status indicators
Working Environment	Indoor
Working Temperature	-10-50 C
Working Humidity	5%-95%RH, no condensation
Installation Methods	Sucked, pinned, placed horizontally
Firmware Update	OTA, USB, FILE, LAN



## TECHNICAL SPECIFICATIONS

WiFi	Up to 300 Mbps PHY data rate
Bluetooth Version	Bluetooth 5.0
Protocol	TCP, HTTP, MQTT, Embedded, (ARM)
Input	DC 5.0 V, 1 A, micro-USB
Accessory	1 x USB cable, mental fixing and screws
Power Supply	DC 5.0, (+- 5%) Max. 5.5 Volts
Cover Range	300 m
Humidity	Max 95%, Noncondensing, relative humidity
Storage Temperature	-40 °F to 185 °F (-40 °C to 85 °C)
Size	5.90 in x 5.90 in x 1.41 in (150 mm x 150 mm x 36 mm)
Net Weight	0.39 lb (180 g)

### 4.1 SOFTWARE SUPPORT

- Tag Cloud and Control Platform is for visualized demonstration, and the API is provided.
- The gateway firmware's SDK is provided, and functions are user customizable.



## 5. PRECAUTIONS

- Standard and connection versions are available for selection. The connection efficiency of the gateway is proportional to the number of Bluetooth modules. If you need multiple Bluetooth modules (up to 6), you can place a customized order.
- G1-E can be powered by 5V/1A DC or PoE. The unified adapter is not provided due to incompatibility in different countries.
- To ensure normal scanning and accuracy, try to install as far away as possible from corners, metal, glass shields, and other obstructions.
- Try not to use the gateway in a humid environment or outdoors. The product could be damaged if exceeds the normal operating temperature range.
- If you need to configure the gateway, please contact our sales team to get more information about G1-E configuration instructions and data interface documents.

## 6. QUALITY ASSURANCE

- The factory has already obtained the certification of ISO9001 Quality System. Each product has been strictly tested (tests include transmission power, sensitivity, power consumption, stability, aging, etc.).
- Warranty Period: 12 months from the date of shipping (Battery and other accessories excluded).

## 7. DIMENSIONS



**Contact us: [sales@gaotek.com](mailto:sales@gaotek.com)**