



| | |
|---------------------|--|
| Product Name | Z-Wave Smart Gateway |
| Product SKU | GAOTek-Z-Wave-106 |
| Product URL | https://gaotek.com/product/gaotek-z-wave-smart-gateway/ |

Contact us: sales@gaotek.com

Based in New York City & Toronto, GAO Tek Inc. is ranked as one of the top 10 global B2B technology suppliers. GAO ships overnight within the U.S. & Canada & provides top-notch support thanks to its 4 decades of experience.

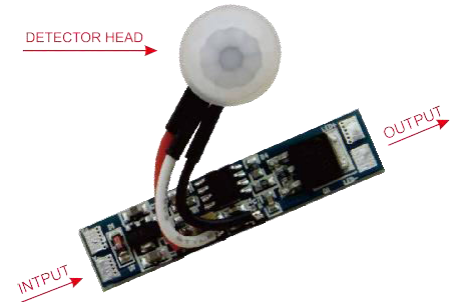


Table of Contents

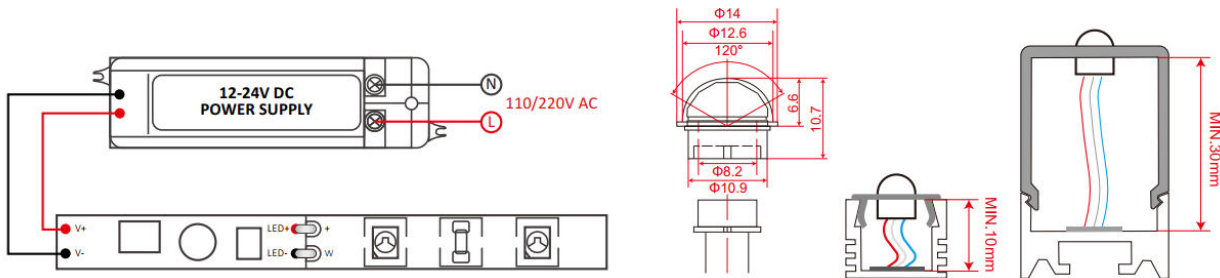
| | |
|--------------------------------------|---|
| 1. Functions..... | 3 |
| 2. Connection Diagram | 3 |
| 3. Operation..... | 3 |
| 4. Installation Setup | 4 |
| 5. Recommended profile..... | 4 |
| 6. Recommended Strips/Optional | 5 |
| 7. Electronic & Output Data..... | 5 |

Functions

| | |
|----------------|-------------------------------|
| Model | PIR001 |
| Operation | Automatically ON/OFF |
| Input Voltage | 12V–24V DC |
| Output Voltage | 12V–24V DC |
| Input Current | Max. 8A |
| Delay Time | About 40 seconds |
| Load Around | 96W for 12V, and 192W for 24V |



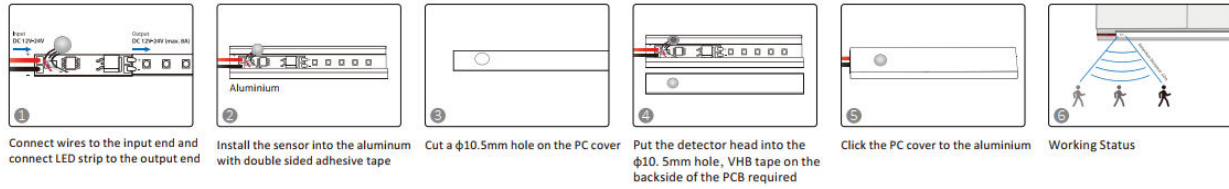
Connection Diagram



Operation

- PIR sensor switch PIR001 can be assembled into lighting fixtures, so the lighting fixture can automatically turn on when any part of human body is approaching within 2 meters from the sensor.
- The lighting fixture equipped with this PIR sensor will stay on if the human body stays within 2 meters from the sensor.
- It will turn off in 40 seconds after human body move away more than 2 meters.

Based in New York City & Toronto, GAO Tek Inc. is ranked as one of the top 10 global B2B technology suppliers. GAO ships overnight within the U.S. & Canada & provides top-notch support thanks to its 4 decades of experience.





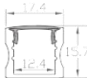

Installation Setup

Note: The function/program can be customized, made upon different needs, such as longer time for stay on, etc.

Notices

1. Avoid being exposed to sunlight, auto bulb and incandescent lamp, neither to heat source (such as radiator and heater), or air conditioner, in case of faulty detection caused by ambient temperature change.
2. Sensor switches must be firmly installed, in case of faulty detection from wind shaking.
3. Don't touch the surface of detector.
4. Regularly clean the optical lens surface with wet soft cloth or cotton, in case of dust influence the sensitivity.

Recommended profile

| Model | Color | Size | Length | Drawing | Photo | intallation |
|-------|---------|---------|--------|---|--|-------------|
| A161 | Aluminu | 16*1 | 1- |  |  | Corner |
| A171 | Whit | 17.4*15 | 1- |  |  | Surface |

Based in New York City & Toronto, GAO Tek Inc. is ranked as one of the top 10 global B2B technology suppliers. GAO ships overnight within the U.S. & Canada & provides top-notch support thanks to its 4 decades of experience.



C191

Black

18.5*18

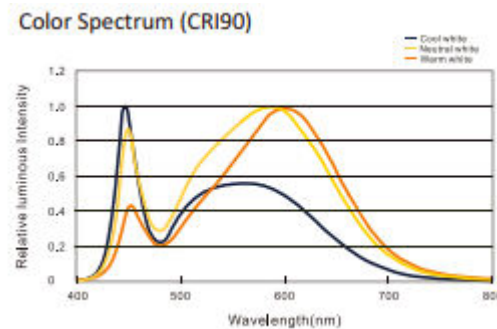
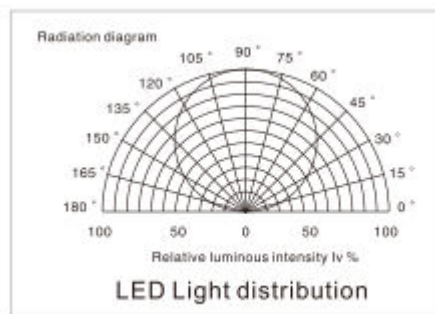
1-



Corner

Recommended Strips/Optional

- Available in 12/24V DC maximum
- CRI80 & CRI90 LED Strip are available



- Working temperature: -20°C to +50°C
- Very bright &

low power consumption

- Long life span LED lights, more than 50,000 hours
- Adhesive back, peel & stick
- IP20, IP65, IP67 are available

Electronic & Output Data

Based in New York City & Toronto, GAO Tek Inc. is ranked as one of the top 10 global B2B technology suppliers. GAO ships overnight within the U.S. & Canada & provides top-notch support thanks to its 4 decades of experience.



SMD2835, 60 LEDS/m

| Size (mm) | Color | CRI | Photo | LED Qty/m | Lumen/m | Voltage (V) | Power (W/m) | Packing (m/reel) |
|---------------|--------------------------------|-----|-------|-----------|---------|-------------|-------------|------------------|
| L5000*W8*H1.5 | WW <input type="checkbox"/> | 90+ | | 60 | 1000 | 12/24V | 14.4 | 5 |
| | NW <input type="checkbox"/> | | | | 1100 | | | |
| | CW <input type="checkbox"/> | | | | 1200 | | | |

SMD2835, 120 LEDS/m

| Size (mm) | Color | CRI | Photo | LED Qty/m | Lumen/m | Voltage (V) | Power (W/m) | Packing (m/reel) |
|----------------|--------------------------------|-----|-------|-----------|---------|-------------|-------------|------------------|
| L5000*W10*H1.5 | WW <input type="checkbox"/> | 90+ | | 120 | 1300 | 12/24V | 14.4 | 5 |
| | NW <input type="checkbox"/> | | | | 1400 | | | |
| | CW <input type="checkbox"/> | | | | 1500 | | | |

SMD2110, 280 LEDS/m

| Size (mm) | Color | CRI | Photo | LED Qty/m | Lumen/m | Voltage (V) | Power (W/m) | Packing (m/reel) |
|----------------|--------------------------------|-----|-------|-----------|---------|-------------|-------------|------------------|
| L5000*W10*H1.5 | WW <input type="checkbox"/> | 90+ | | 280 | 1420 | 24V | 19.2 | 5 |
| | NW <input type="checkbox"/> | | | | 1460 | | | |
| | CW <input type="checkbox"/> | | | | 1510 | | | |

Based in New York City & Toronto, GAO Tek Inc. is ranked as one of the top 10 global B2B technology suppliers. GAO ships overnight within the U.S. & Canada & provides top-notch support thanks to its 4 decades of experience.