



<b>Product Name</b>	<b>Smart Photoelectric Smoke Sensor</b>
<b>Product SKU</b>	<b>GAOTek-ZW-147</b>
<b>Product URL</b>	<b><a href="https://gaotek.com/product/gaotek-photoelectric-sensor/">https://gaotek.com/product/gaotek-photoelectric-sensor/</a></b>

**Contact us: [sales@gaotek.com](mailto:sales@gaotek.com)**

Based in New York City & Toronto, GAO Tek Inc. is ranked as one of the top 10 global B2B technology suppliers. GAO ships overnight within the U.S. & Canada & provides top-notch support thanks to its 4 decades of experience.



## Content

### Index

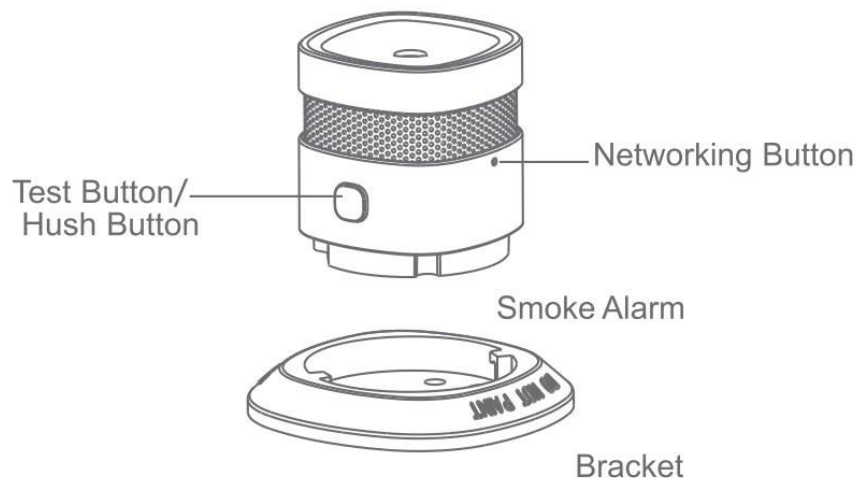
1. Product Introduction .....	3
2. Technical Specifications .....	3
3. Installation.....	4
4. Installation Instruction .....	4
5. LED State and Alarm .....	7
6. FAQ.....	8
7. Hush and Test.....	8
8. Battery Replacement.....	9
9. Maintenance.....	10
10. Warning.....	10
11. Notes .....	11

Based in New York City & Toronto, GAO Tek Inc. is ranked as one of the top 10 global B2B technology suppliers. GAO ships overnight within the U.S. & Canada & provides top-notch support thanks to its 4 decades of experience.



## Product Introduction

This product is a smart photoelectric smoke sensor, with ultra-low-power Zigbee wireless network technology design. It is capable of real-time detecting the presence of smoke, once detect danger of fire smoke, red LED flashes rapidly and detectors sound alarm once detecting smoke fire danger, can alert you and your family timely. It can be widely used in household, lounge, coffee house, dancing hall any other places need fire alarm monitoring. Free tool installation, once stick once use.



## Technical Specifications

1. Working Voltage: DC3V(CR17335/CR123A Lithium Battery)
2. Alarm Indication: Red LED
3. Sound Level:  $\geq 85$ dB/3m
4. Networking Way: Zigbee
5. Distance Of Ad-Hoc Network:  $\leq 70$ m(open area)
6. Working Temperature:  $-10^{\circ}\text{C} \sim +50^{\circ}\text{C}$
7. Working Humidity:  $\leq 95\%$ RH
8. Dimensions:  $60 \times 60 \times 49.2$ mm

Based in New York City & Toronto, GAO Tek Inc. is ranked as one of the top 10 global B2B technology suppliers. GAO ships overnight within the U.S. & Canada & provides top-notch support thanks to its 4 decades of experience.

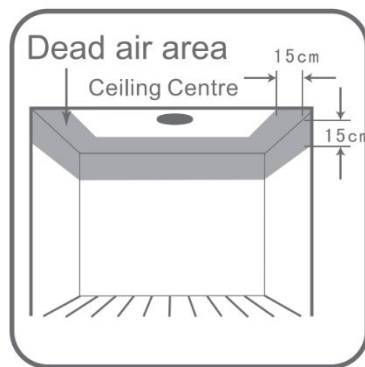
## Installation

### 1. Flat ceiling mounting

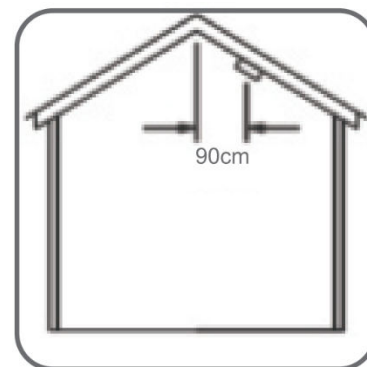
The preferred location to install smoke sensor is in the centre of the ceiling, because smoke, heat and combustible products rise to ceiling and will laterally spread. Keep at least 30cm distance from lights or decorations, and at least 15 cm away from walls and corners.

### 2. Sloping ceiling mounting

If ceiling is sloping, please install the smoke sensor at horizontal distance 90cm away from the ceiling top.



Recommended and Avoided Installation Position



Sloping Ceiling Mounting Position

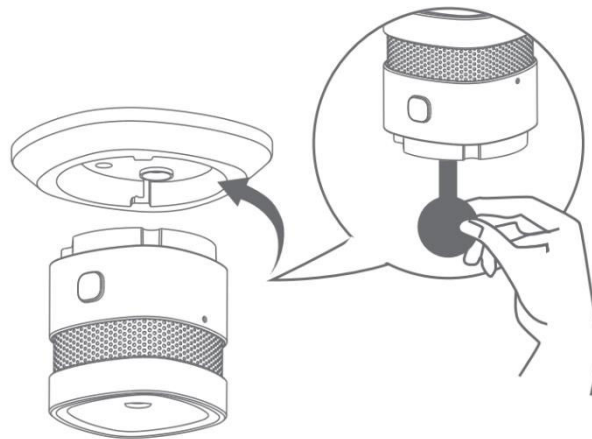
## Installation Instruction

1. Please put smart hub into the center of alarm.
2. Please shorten the distance between smart hub and alarm.
3. Please reduce barriers between smart hub and alarms.
4. Avoid installing in places with high noise area or high frequency interference, like places near from metal air conditioner, heater devices, current circuit breaker control box.
5. Building materials with metal net or metal bar may reduce the wireless transmission distance, like reinforced concrete wall.

Based in New York City & Toronto, GAO Tek Inc. is ranked as one of the top 10 global B2B technology suppliers. GAO ships overnight within the U.S. & Canada & provides top-notch support thanks to its 4 decades of experience.

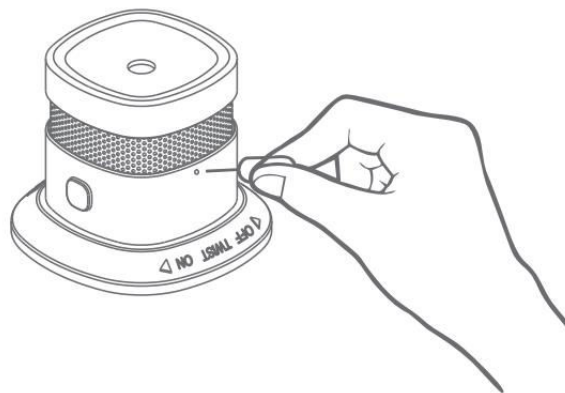
6. Damping of the signal makes direct ratio with barrier, if the materials of the barrier is homogeneous.

Installation Step 1



7. Rotate the alarm anticlockwise to separate from bracket, then remove insulating strip to electrify the alarm.

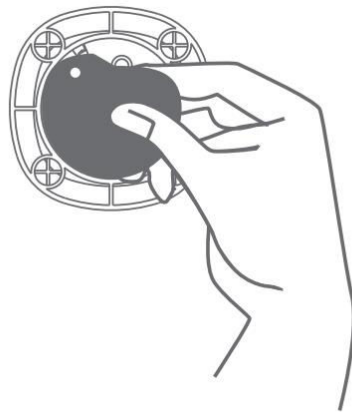
Installation Step 2



8. Add device: According to APP prompt, long press networking button for 5 seconds, device comes into networking state, the green LED indicator will flash slowly first for about 3 seconds, and then flash quickly. Networking success when green LED keeps on for 3 seconds and then goes off, and APP will prompt networking success. If networking failed, green LED flash slowly for 3 seconds, then goes off, APP will prompt networking failed.

### Installation step 3

9. Installation one: remove the double-sided adhesive and stick alarm into ceiling.
10. Install:



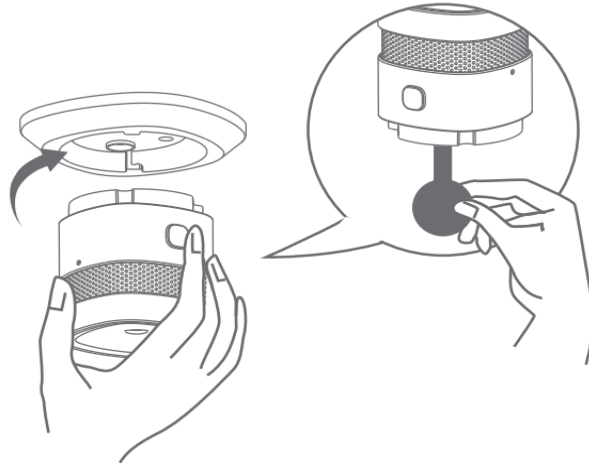
Installation one



Installation two

11. Installation with double-sided adhesive should pay attention to as follows:
  - a) 1. Make sure the installation surface is smooth, flat, stable, dry and clean.
  - b) 2. After installation, regularly check whether the product is attached firmly to the installation surface.

Installation Step 4



12. Remove the battery insulating strip to make detector on power, and clockwise rotating alarm into bracket.

State	LED	Sound Alarm
Stanby	red LED flash every 53 seconds	NO
Test	red LED flash quickly	rapid "Di-Di-Di"
Alarm	red LED flash quickly	rapid "Di-Di-Di"
Hush	red LED flash every 10 seconds	NO
Low Power	red LED flash one time	"Di" every 53 seconds
Fault	red LED flash twice every 53 seconds	"Di-Di" for twice every 53 seconds



**FAQ**

Phenomenon	Analysis	Treatment
Power on and alarm	there is large dust or vapour	power on after cleaning dust or vapour
Power on with short "Di-Di"	Low power	Change same battery
Buzzer do not alarm or small sound	Low power	Change same battery
Press test button but no alarm	power connect of battery, or battery polarity inverse	install battery and pay attention to battery polarity
	Low power	Change same battery
Device off line	Low power	Change same battery
	smart device too far away from smart hub	1.Add repeater 2.Shorten distance between smart hub and smart devices, press test button or power on again.
Networking failed	Alarm device not quilt from network	Quilt network frist before networking
	gateway do not enter network state	Make sure gateway under networking state

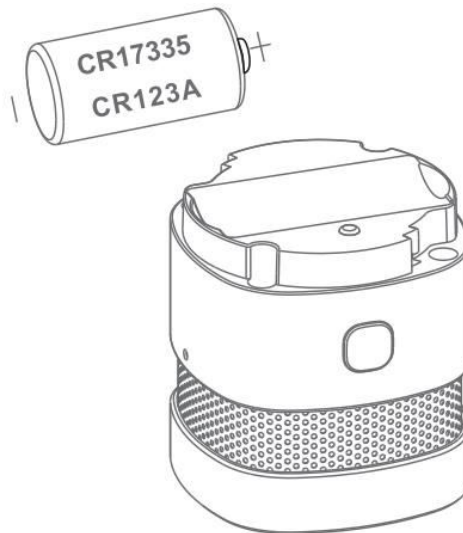
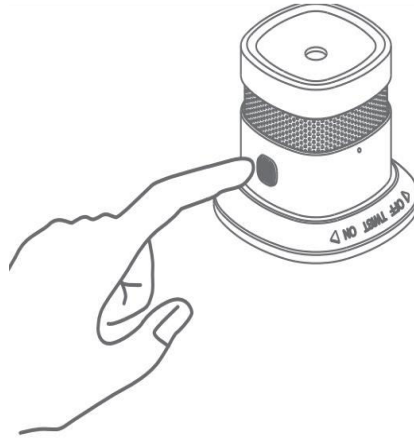
**Hush and Test**

Please make sure that there is no real danger of fire when using mute function. Under known and non-fire alarm condition, please do not block or by any other form to prohibit alarming. Press the Test/Hush button to lower sensitivity and relieve alarm.



GAOTek

Press and hold the test panel Test/Hush button for 3 seconds, as above picture shows, until alarm status (see status table). Testing is recommended to be done at least once a month. Do not use flame for testing. Once the alarm is sure to please pay attention.



## Battery Replacemen

Based in New York City & Toronto, GAO Tek Inc. is ranked as one of the top 10 global B2B technology suppliers. GAO ships overnight within the U.S. & Canada & provides top-notch support thanks to its 4 decades of experience.



Please replace battery correctly, following the battery positive and negative electrode. Attention to environmental protection and dispose used battery properly.

## Maintenance

Please press test button to test alarm devices weekly, after devices put into use. Please inspect the alarm device or return back factory if any faults happened (like buzzer do not make sound, LED do not turn on).

1. Battery can use around 3-5 years under normal condition, high temperature, high humidity or other poor condition may shorten battery life span.
2. Please change the same battery timely when receiving low power indication, press test button if alarm device make sound and flash alarm means change battery success.
3. Please install alarm device as soon as alarm devices planning to be test, make sure alarm devices in good condition, and takes measure for dust proof, damp proof and corrosion proof etc.
4. Do not dismantle alarm devices privately if any problems of alarm devices happened, please power off and contact local agent.
5. Suggest change new battery after real fire alarm happened.

## Warning

1. Do not install alarm devices in places with high temperature, high humidity, heavy oil fume, and keep nearby environment clean.

Based in New York City & Toronto, GAO Tek Inc. is ranked as one of the top 10 global B2B technology suppliers. GAO ships overnight within the U.S. & Canada & provides top-notch support thanks to its 4 decades of experience.



2. Avoid install in places near from heavy oil paint, diluent or other colloid suspended solids, in case of any influence for normal detecting of alarm devices.
3. This product is household usage smart smoke alarm, which can make sound and flash alarm when fire happens, but can not put out a fire.

## Notes

1. The pictures shown are for reference only.
2. As the technology is constantly updated, if actual operation is inconsistent with the user manual, the final interpretation rights is reserved to the manufacturer.